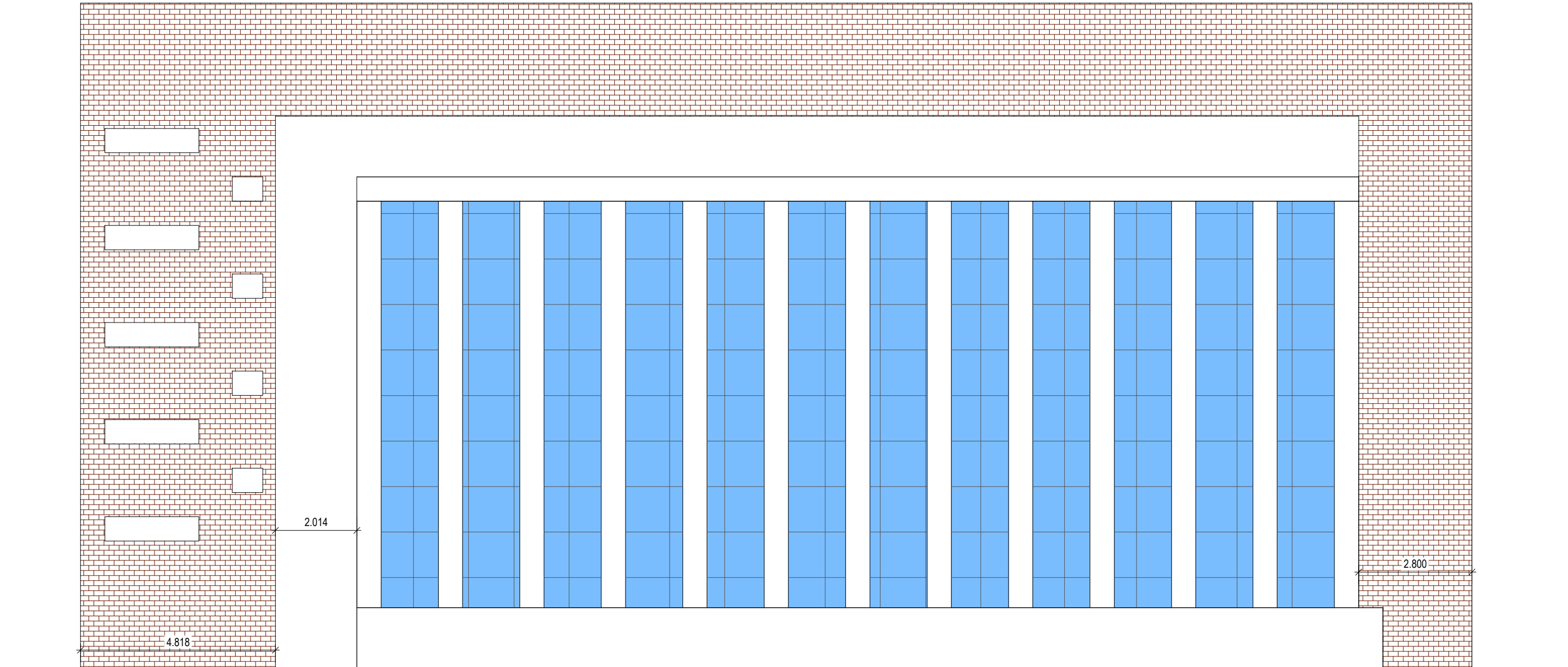
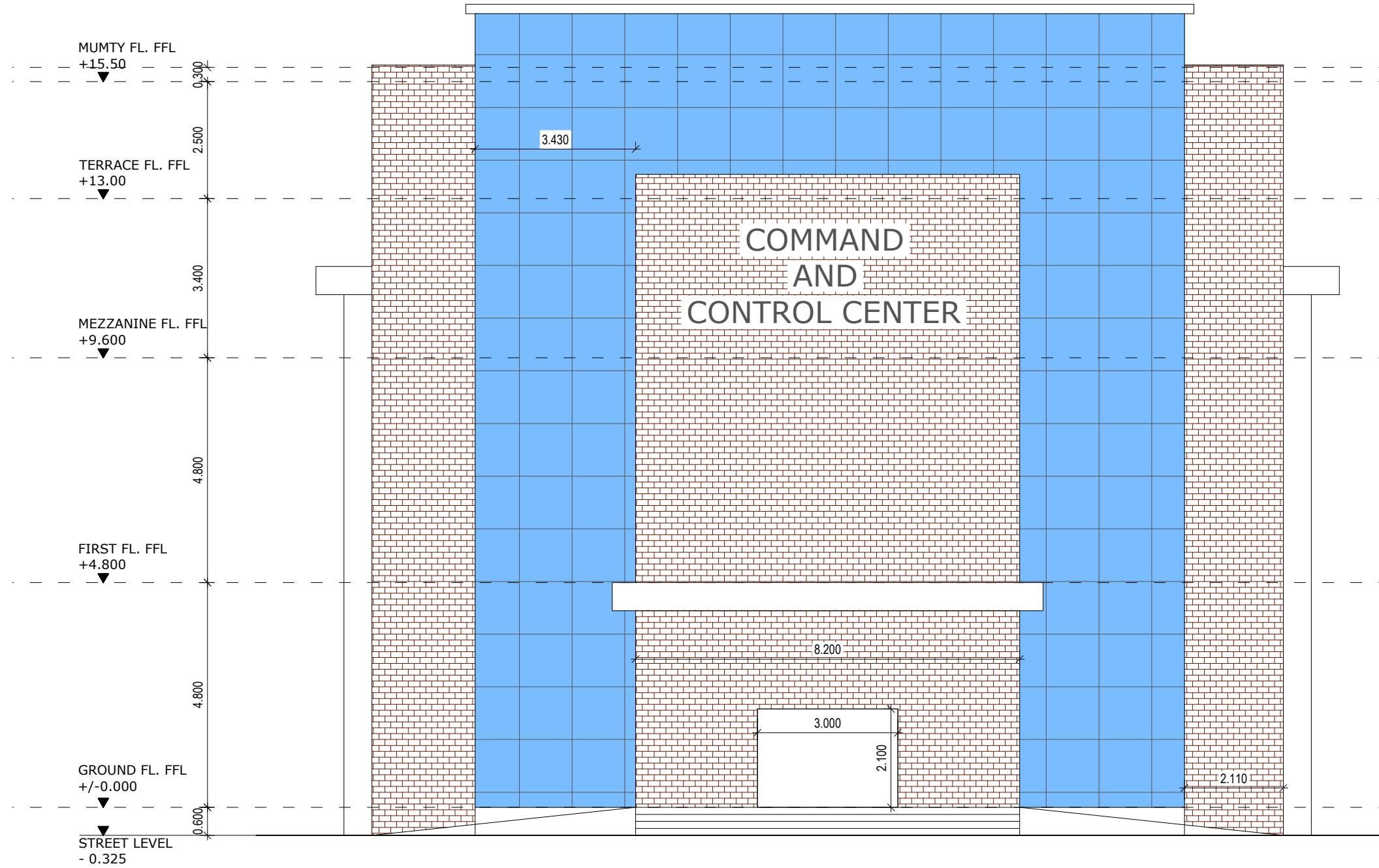


# Command & Control Centre at Jabalpur



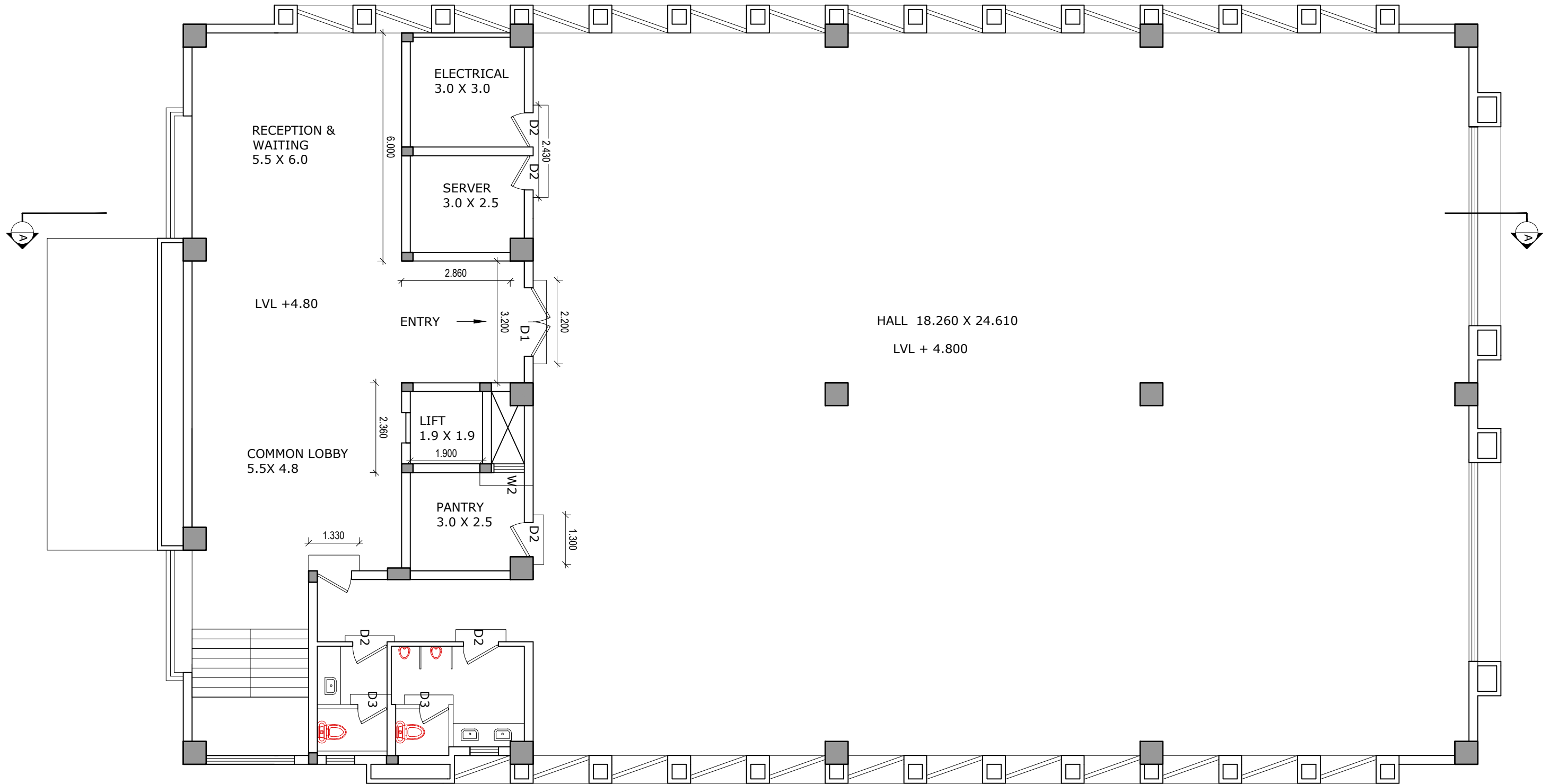
**EAST SIDE ELEVATION**

# Command & Control Centre at Jabalpur



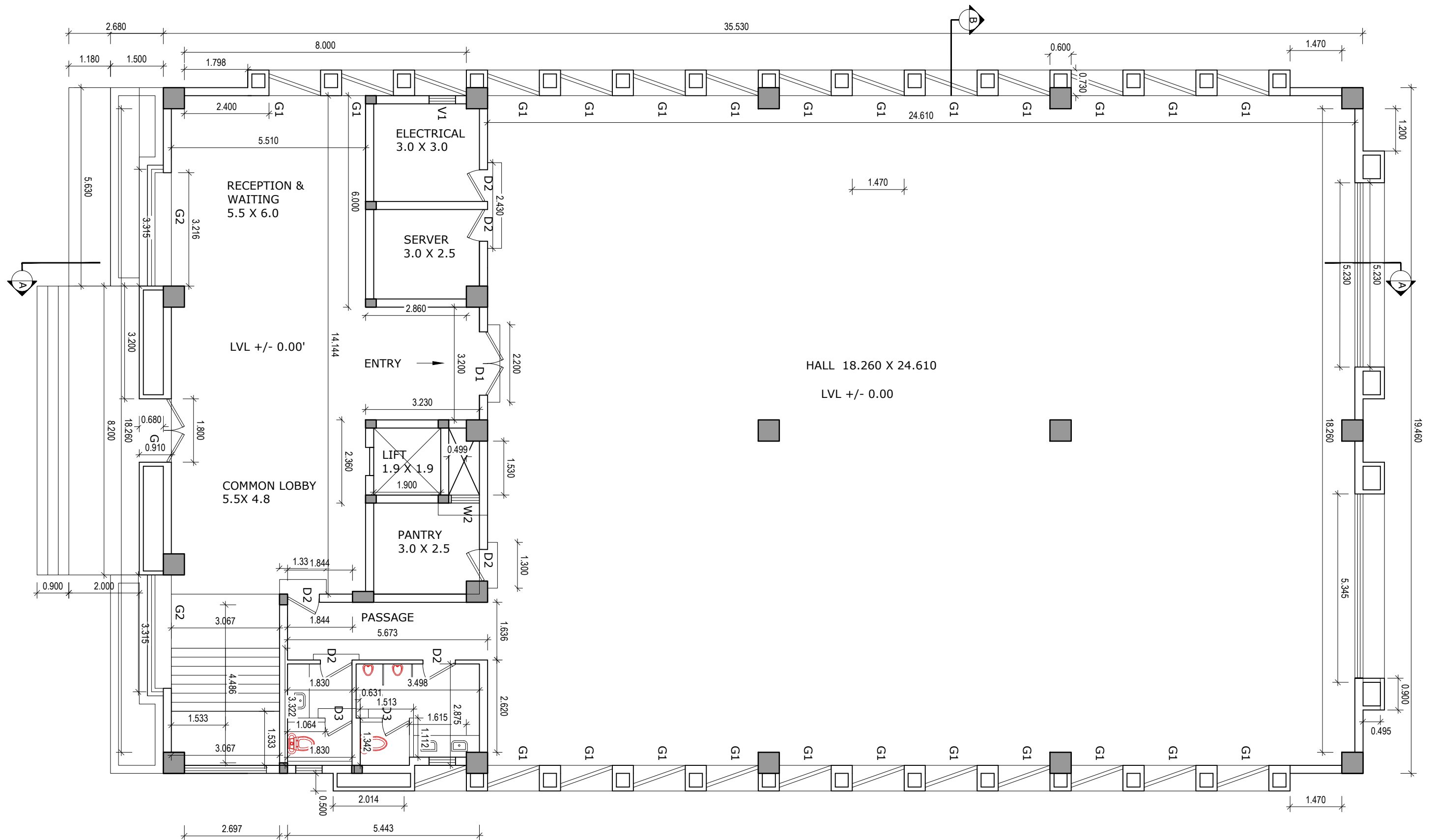
**FRONT ELEVATION**

# Command & Control Centre at Jabalpur



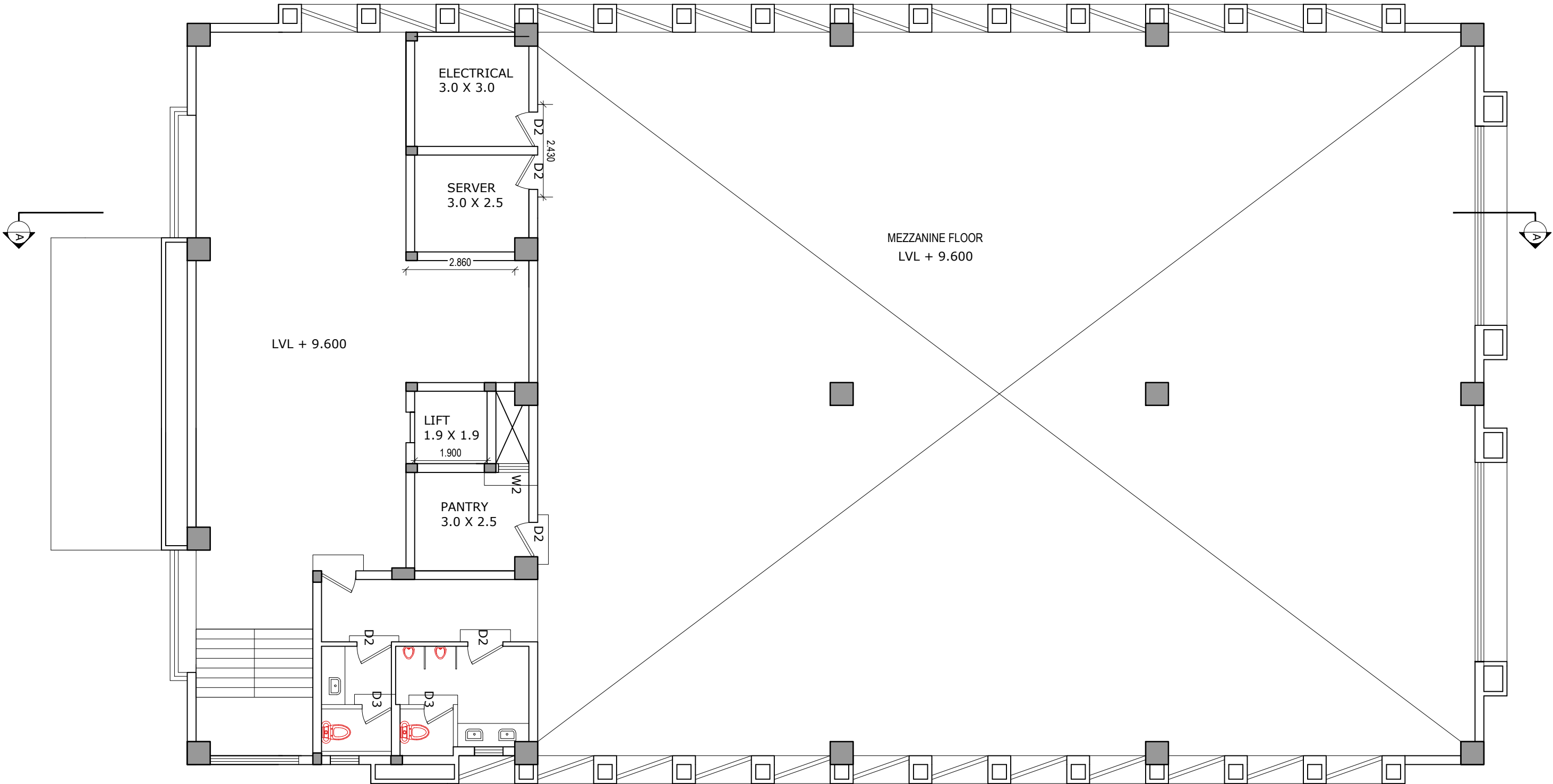
FIRST FLOOR PLAN

# Command & Control Centre at Jabalpur



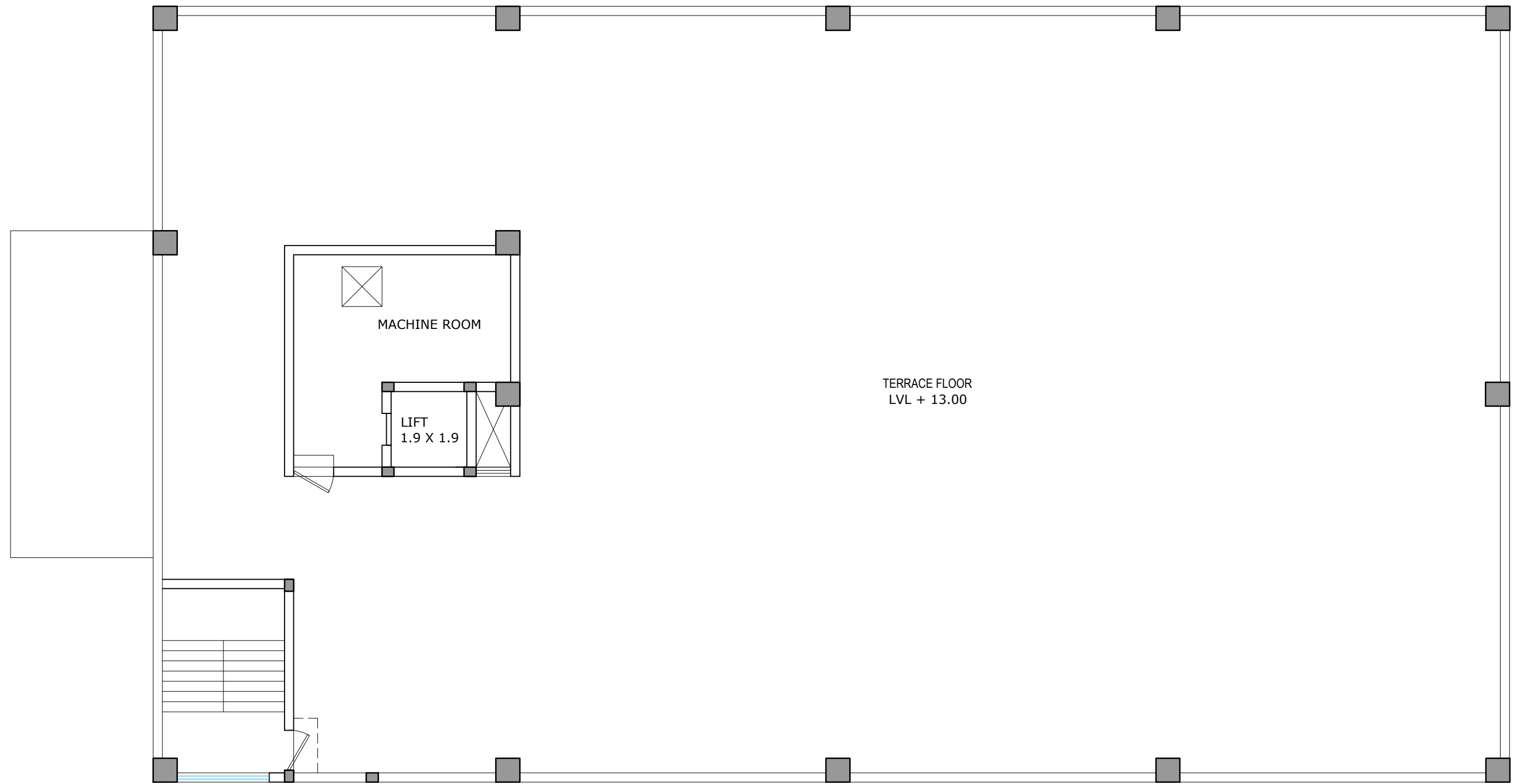
GROUND FLOOR PLAN

# Command & Control Centre at Jabalpur



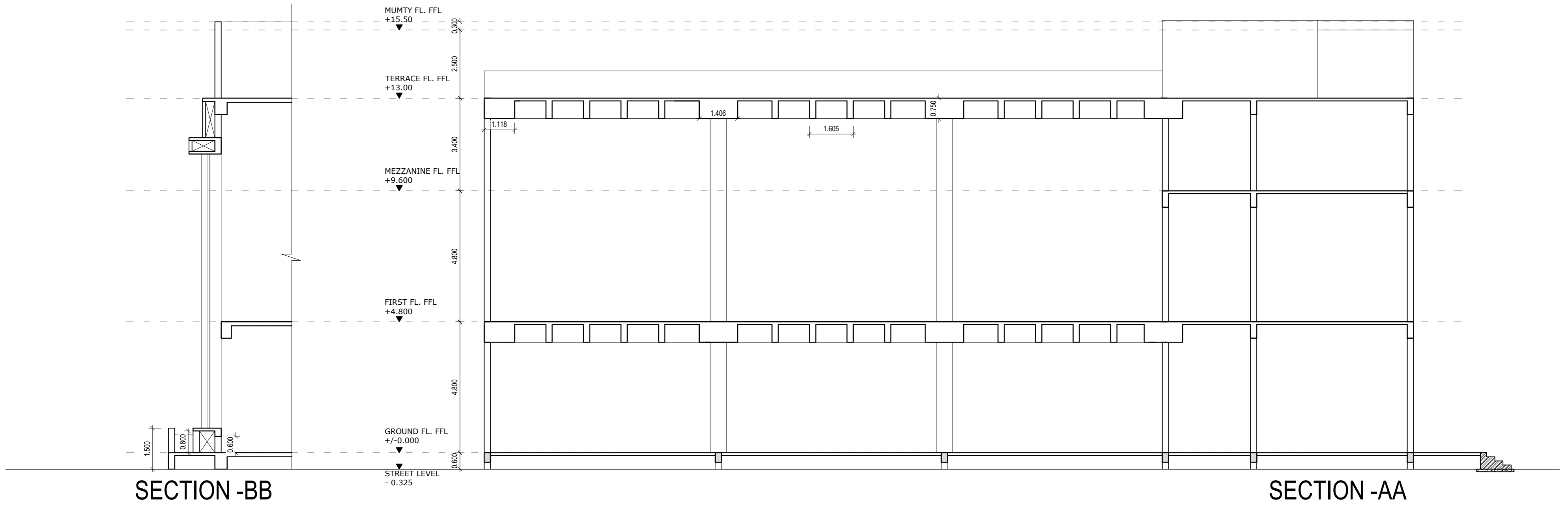
MEZZANINE FLOOR PLAN

# Command & Control Centre at Jabalpur

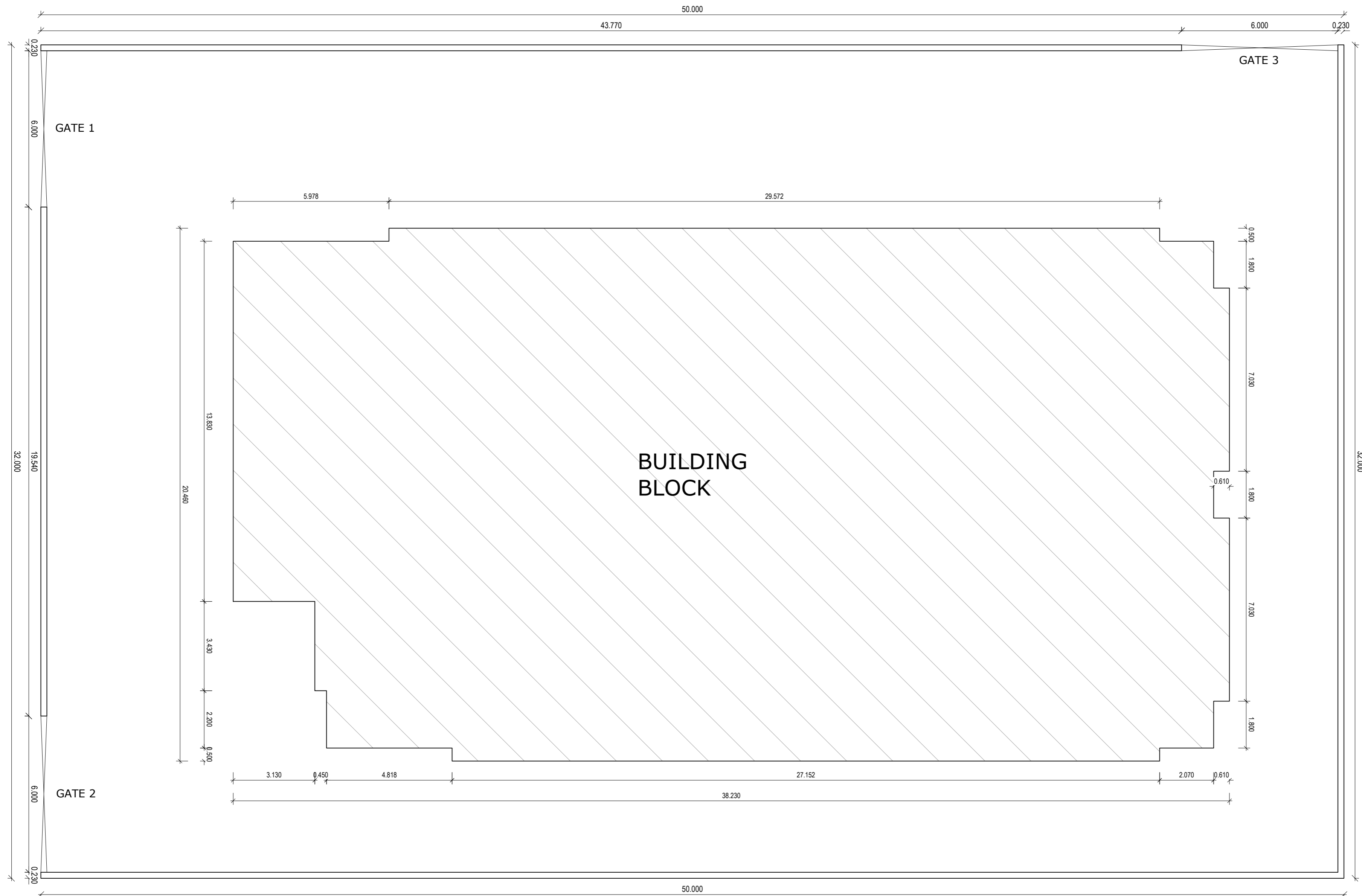
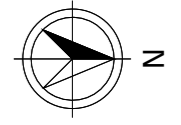


TERRACE FLOOR PLAN

# Command & Control Centre at Jabalpur



# Command & Control Centre at Jabalpur



SITE PLAN

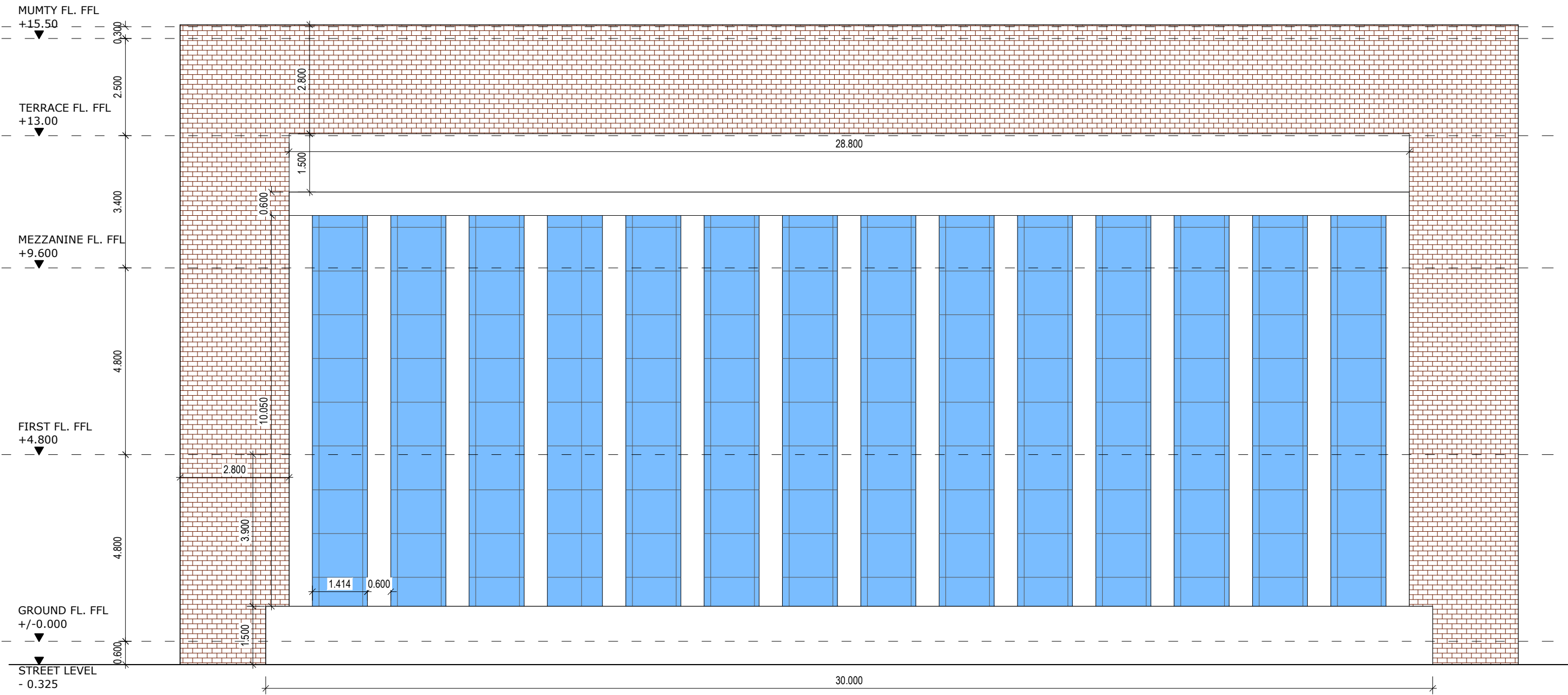
**AREA STATEMENT**

TOTAL PLOT AREA	: 1600 SQ.M.
BUILT-UP AREA OF GROUND FLOOR	: 750.40 SQ.M.
BUILT-UP AREA OF FIRST FLOOR	: 750.40 SQ.M.
TOTAL BUILT-UP AREA	: 1500.8 SQ.M.
GROUND COVERAGE	: 46.90%

SHEET A2  
SCALE 1:100



# Command & Control Centre at Jabalpur



**WEST SIDE ELEVATION**